

```

<?xml version="1.0"?>
<!DOCTYPE html PUBLIC "-//W3C//DTD XHTML 1.0 Transitional//EN"
    "http://www.w3.org/TR/xhtml1/DTD/xhtml1-transitional.dtd">
<html xmlns="http://www.w3.org/1999/xhtml">
<head>
<title>DHTML Tool Tips FX</title>
<meta http-equiv="Content-Type" content="text/html; charset=ISO-8859-1" />
</head>
<body>
    <h1 class="header1" align="center">DHTML Tool Tips FX</h1>
    <h1 class="header2" align="center">333 Creative Central</h1>
    <h2 class="header3" align="center">Trent Pastrana</h2>
    <h2 class="header4" align="center">Eddie Traversa</h2>
<p align="center">
<table cellspacing="0" cellpadding="10" border="1" width="80%">
<tr>
<td colspan="2" class="header2"></td>
</tr>
<tr>
<td valign="top" class="header3">Lean and Mean Tips</td>
<td align="left">
<ol>
    <li>Tags</li>
    <li>Elements</li>
    <li>Attributes</li>
    <li>Properties</li>
</ol>
</td>
</tr>
<tr>
<td valign="top" class="header3">HTML Structure</td>
<td align="left">
<ol>
    <li>Trent Pastrana was here and you were not.</li>
    <li>Header</li>
    <li>Title</li>
    <li>External Links</li>
    <li>BODY</li>
</ol>
</td>
</tr>
<tr>
<td valign="top" class="header3">Cool Tips</td>
<td align="left">
<ol>
    <li>Syllabus</li>
    <li>Get it through your head that Eddie Rocks!</li>
    <li>Buy the Tips</li>
    <li>Use the Tips</li>
    <li>Stun your clients</li>
</ol>
</td>
</tr>
</table>
</body>
</html>

```



333 CREATIVE CENTRAL

Overview

In this PDF

- Become acquainted with the Tool Tips FX Extension.
- Learn about its features.
- Take a tour through the step by step tutorial.
- Learn how to get the most from the extension by becoming familiar with some of its advanced features.

WELCOME to the tool tips FX documentation. This document was prepared so that you can become more familiar with all the great features of the Dreamweaver extension you have just purchased.

In this document, you will learn how to best use the DHTML Tool Tips FX extension. We will demonstrate in detail what each feature does and also provide a step by step tutorial to help you on the way.

Wherever possible we provide screen shots of the user interface so that you can better follow the explanations. In short, we are here to help you get the most out of this cool new tool.

We have taken great care to ensure the best possible product, but should you experience any technical difficulties please email us at support@333creativecentral.com

Contents

- **The Legal Stuff** — All the stuff we have to say to protect our interests and yours as well.
- **Introduction** — A general overview of the Tool Tips Extension and some of its features.
- **The User Interface** — This section of the document begins with a global look at the user interface employed by the extension. It then goes on to explain each of the various features of the extension and the various options associated with them.
- **Step by Step Tutorial** — The step by step tutorial is designed to get you up and running in the quickest possible time. In this section of the document, we help you become acquainted with using some HTML in the Tool Tips, how to style the tool tips, make a tool tip translucent and a whole lot more.
- **Support** — Discusses various options for support and help for the DHTML Tool Tips extension.



Copyright

The purchase of this template entitles you to use the DHTML Tool Tips FX extension for your own personal and business purposes. No part of this template and supporting documentation may be reproduced, replicated, stored in a retrieval system, transmitted, transcribed, in any form or by any means, - electronic, mechanical telepathic, pantomime, or otherwise, without the prior written consent of the developers.

Trademarks

Names of all products herein are used for identification purposes only and are trademarks and / or registered trademarks of their respective owners. Eddie Traversa & Trent Pastrana make no claims of ownership or corporate association with the products or companies that own them.

Disclaimer

All effort has been made to make this template as error free, complete and accurate as possible, but no warranty of fitness is implied. The authors shall have neither liability nor responsibility to any persons or entity with respect to any loss or damages arising from the use of this template. Contrary to popular opinion no secret messages relating to mind control are contained within this documentation.

EDDIE TRAVERSA & TRENT PASTRANA



Introduction

Introduction

In this Section

- An overview of what you have purchased for your hard earned dollar.
- Dreamweaver version support.
- Browser and Platform support.

Welcome to the introductory page for the DHTML Tool Tips FX Extension. We are delighted to offer this extension for creating the ultimate in tool tips. Priced at \$29.95 US this extension offers the following features.

- 43 Different Transition Effects for Internet Explorer 5.5 and above.
- Fade effect for Netscape 7. Degrades gracefully for Netscape 4, Internet Explorer 4+, Opera 7.
- Optional DHTML Mouse Tracking.
- Each individual tool tip can be positioned and sized to suit.
- Positioning auto-adjusts so that the tool tips is always on screen.
- Customize the appearance of individual tool tips. Some of the options include, setting background colors, font colors and borders for each tool tip.
- Tool tips can utilize advanced HTML markup to further enhance the presentation of the tool tips.
- Set the tool tips to be translucent. .
- User friendly extension user interface, will allow you to create your own tool tips in minutes.

Included

- Each individual tool tip can be positioned and sized to suit.
- Complete Online Documentation.
- Step by Step Tutorial.

Introduction

- Printable PDF.
- Superior quality support.

Dreamweaver Support

The following Dreamweaver versions are supported by the DHTML Tool Tips FX extension;

- Dreamweaver MX.
- Dreamweaver 4, UltraDev 4.
- Dreamweaver 3.

Browser Support

We support the following browsers;

- Internet Explorer 5.5, Internet Explorer 6
- Netscape 7, Opera 7, Internet Explorer 5 on Mac.
- Internet Explorer 4, Internet Explorer 5, Netscape 4.7



The User Interface

In this Section

- Learn how to install the extension.
- Examine where the extension is located with the Dreamweaver Interface.
- Take a look at the DHTML Tool Tips FX user interface.
- Explore each of the features of the DHTML Tool Tips Dreamweaver Extension.

This section is designed to help you become acquainted with the user interface for the DHTML Tool Tips Extensions. As is the case with all our extensions, the user interface is intuitive; however, we often find that it really helps if you read through the documentation at least once, to better understand the capabilities of our extension. Let us begin by discovering how to install the extension;

Installing the Extension

After you have purchased the extension, simply unzip it to a folder of your choice. In the top level directory of the installed components, you will find two extensions in mpx format. If you are using DW4, UD4 or DWMX then click on the extension entitled:

`ToolTips FX4`

If you have Dreamweaver 3 then click on the extension named:

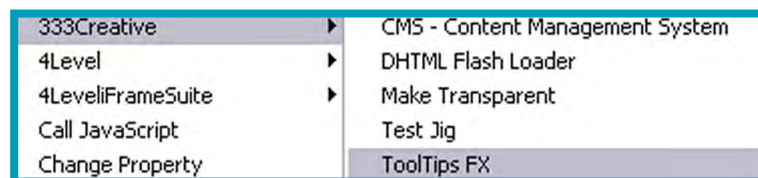
`ToolTips FX3`

Please ensure that you click on the correct extension for your version of Dreamweaver or UltraDev. The extension manager will then install the scripts and associated files in their correct directories.

Accessing the Extension

Once the extension is installed, you can access the extension from the behavior panel in the 333Creative option;

Figure 1: Behaviour panel start up

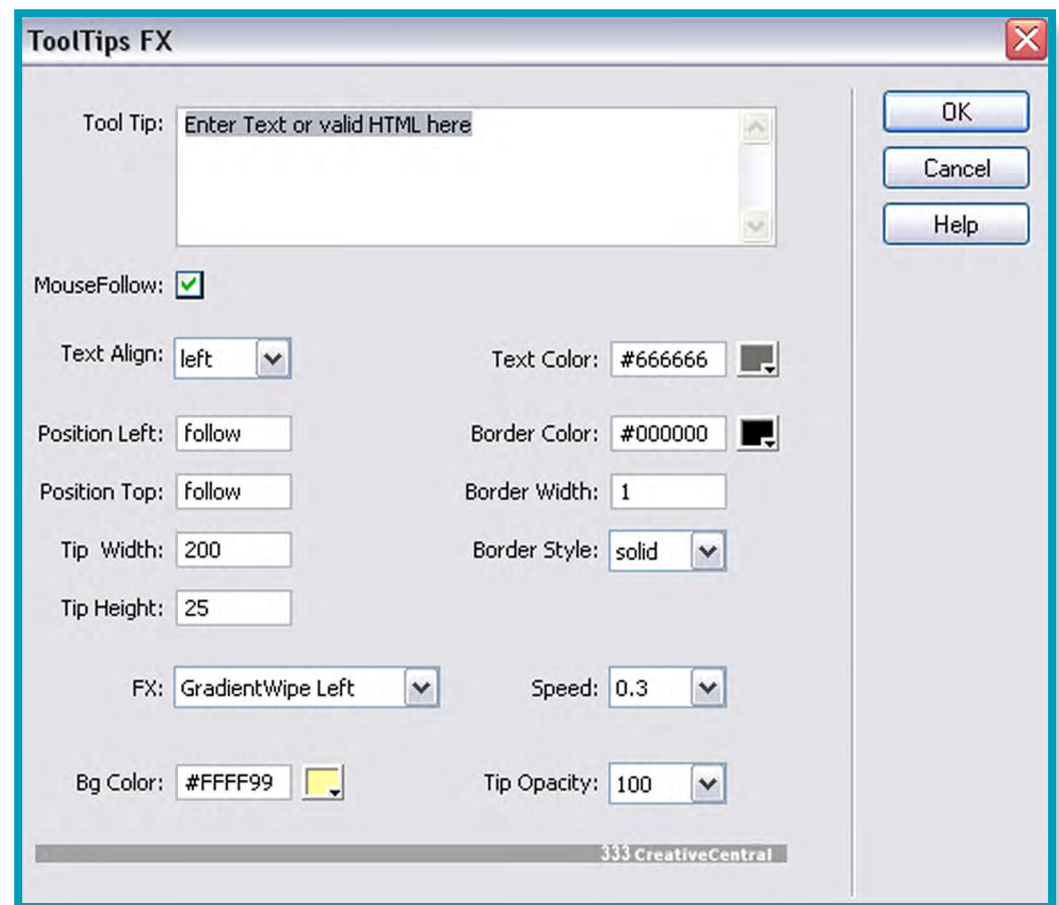


Simply click on that option and the Tool Tips FX user interface (UI) will appear. Now let's familiarize ourselves with each option in the UI, beginning with a screen shot of the entire UI.

The User Interface

When the extension first opens up the following dialogue screen will appear to you. Although quite self-explanatory, let us begin to familiarize ourselves with the user interface by taking a look at a screen shot.

Figure 2: Screen shot of the user interface.



As you can no doubt tell there are a lot of options associated with this extension. Let us take a look at each option in turn.

The User Interface

QUICK TIP

- If you are using images with the tool tip extensions then please remember to preload them. Not doing so will see some performance degradation.

The Tool Tip Option

This option allows you to define what text or HTML will appear in the Tool Tip. Just type the text you want to appear in the Tool Tip and the extension will take care of the rest. If you want to use some HTML for different appearance effects then type in the HTML in the field. For example, if you wanted to highlight one word in the text you could input similar to this, provided that a css class rule named `tipexample1`, exists on your web page:

Enter `Text` or valid HTML here

In the above example, the word `text` would have the class `"tipexample1"` applied to it.

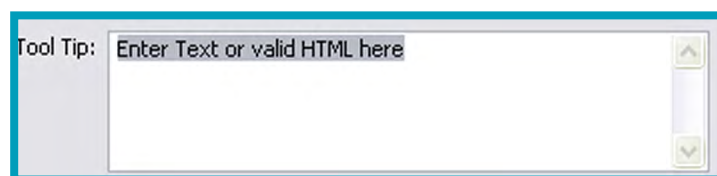
If you are working with images it is sometimes easier to parse the image without any quotes. For example:

```
<img src=someurl width=200 height=200 />
```

However, in most instances Dreamweaver will parse quotes by replacing them with character entities and that is a more legitimate way of handling images. The above example of not using quotes should be used only if the image is not displaying correctly.

A screen shot of the tool tip option is located below:

Figure 3: Screen shot of the tool tip option.



The Mouse Follow Option

The second option in the UI is the mousefollow option. If the select box is checked then the tool tip will follow the mouse around while the mouse is

The User Interface

QUICK TIP

- You will notice that when the mousefollow option is checked, that the position left and position top options respectively have the word follow in the text fields. This indicates to the user that no numeric values need to be typed into those two options.

over the link. There is no need to type in values for Position Left or Position Top if the mousefollow option is selected. The script will automatically position the tool tip.

If you want to use absolute positioning instead of having the Tool Tip follow the mouse then leave the mousefollow tool unchecked.

When mousefollow is unchecked you must type in numeric values in the Position Left and Position Top options. The positioning of the Tool Tip works in exactly the same fashion as absolutely positioning a Layer in Dreamweaver.

The following screen shot displays the mouse follow option.

Figure 4: Screen shot of the mousefollow option.



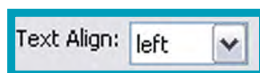
The Text Align Option

The text align option utilizes a drop down menu that provides three options for aligning text used in the Tool Tip. These are:

- Left
- Right
- Center

Below is a screen shot of the text align option.

Figure 5: Screen shot of the text align option.



The Text Color Option

The text color option allows the user to define the color of the text used in the tool tip. Simply select the color of your choice by using the familiar

The User Interface

Please Note

- Dreamweaver 3 does not have a color picker option. Instead you need to type in the color values for this version.

Macromedia Color Picker and the extension will take care of the rest. Text color can be set for each individual tool tip. The following screen shot displays the option for the text color.

Figure 6: Screen shot of the text color option.

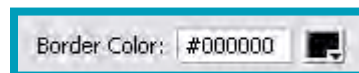


The Border Color Option

Border colors can add that distinctive touch to your tool tips so we included this feature in the DHTML Tool Tips FX extension.

Similar to the text color option the border color of the tool tips can be selected via the default Macromedia Color Picker. Different color borders may be set for each individual tool tip.

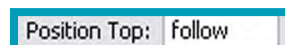
Figure 7: Screen shot of the border color option.



The Position Top Option

This option allows the user to position the tool tip from the left of the browser screen, when the mousefollow option is not selected. The tool tip is positioned using absolute positioning. Simply type in a numeric value and the tool tip will be positioned accordingly.

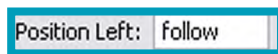
Figure 8: The position top screen shot.



The Position Top Option

Similar to the position left option, the position top option also works with absolute positioning. To use this option the mousefollow feature must not be selected. Type in a numeric value and the tool tip will display in the according pixel position from top of screen.

Figure 9: The position left screen shot.



The Border Width Option

Included in this extension is an option to set the width of the tool tip. Any valid numeric value typed into the text field will be reflected in the tool tip. The smaller the number the smaller the border width will be.

Figure 10: The border width option screen shot.



The Border Style Option

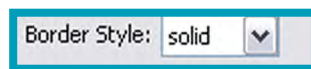
The drop down menu allows you to select from a list of border styles which will subsequently be utilized by the tool tips. The options available are as follows:

Please Note

- Netscape 7 currently has a bug that prevents the double border option to display correctly.
 - Netscape 4 does not support the dynamic manipulation of border styles. Consequently, the border style for NS4 will always appear as solid.
- None
 - Dotted
 - Dashed
 - Solid
 - Double

- Groove
- Ridge
- Inset
- Outset

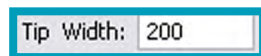
Figure 11: The border style option screen shot.



The Tip Width Option

This option allows the user to set the width dimension of the tool tip. Simply type a value and the extension will display the tool tip with the width you have inputted.

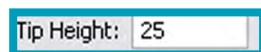
Figure 12: Screen shot of the tip width option.



The Tip Height Option

This option allows the user to set the height dimension of the tool tip. Simply type a value and the extension will display the tool tip with the height you have inputted.

Figure 13: Screen shot of the tip height option.



The FX Option

Microsoft Internet Explorer 5.5 and above has the ability to utilize Direct X Filters. The tool tip extension makes use of these filters so that stunning transition effects are available for Internet Explorer 5.5 and above.

Forty three different presets for transition effects are supplied with the extension. To use them simply select the transition of your choice from the drop down menu list.

Please note, that browsers other than Internet Explorer 5.5 and above degrade gracefully and setting filters will not affect other browsers.

Figure 14: Screen shot of the fx option.



Worth Repeating!

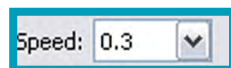
- By setting the speed option to 0, you can disable the filters effects so that the tool tips appear as normal tips.

The Speed Option

This option allows you to set the speed of the transition effect. The lower the number used the quicker the speed of the transition. Select an option from the drop down menu list to set the speed of the transition.

You may also disable the filter effects for Internet Explorer 5.5 and above by setting the speed setting to 0. When this option is selected, the tool tips will appear without any transition effect.

Figure 15: Screen shot of the speed option.



The Background Color Option

The background color option allows the user to define the color of the background used in the tool tip. Simply select the color of your choice by using the familiar Macromedia Color Picker and the extension will take care of the rest.

Figure 16: Screen shot of the background color option.

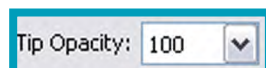


The Opacity Option

The opacity option allows you to make the tool tips semi-transparent in appearance. Simply set the level of opacity / transparency that you want to apply to the tool tips from the drop down menu option. Setting the opacity to 0 would see the tool tip completely transparent and 100 would see the tool tip completely opaque.

When using this option, the filters transitions are switched of by default to gain best performance.

Figure 17: Screen shot of the opacity option.



Step By Step Tutorial

This section is designed to help you become more familiar with the extension and allow you to build your first tool tip by providing a step by step tutorial.

Step 1: Style the Document

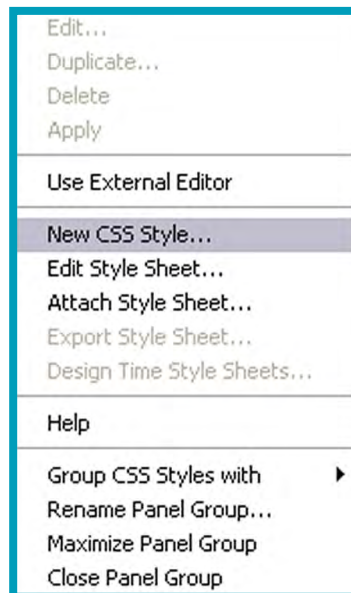
In this Section

- Learn how to create your first tool tip.
- Use some advanced HTML formatting.
- Examine how to style a document.

Before getting into the actual creation of the tool tips let's do some preliminary styling work and get a half decent color scheme together at the same time.

a) In Dreamweaver go to the styles palette and select New CSS Style.

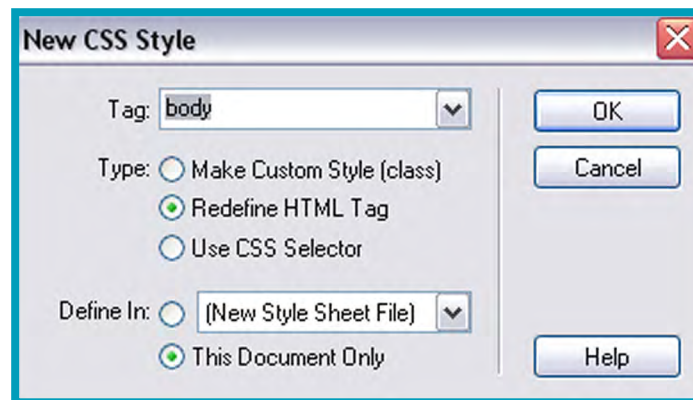
Figure 18: Screen shot of selecting a new style.



Step By Step Tutorial

b) Then select the Redefine HTML Tag option and select the body tag:

Figure 19: Screen shot of redefining a HTML tag.

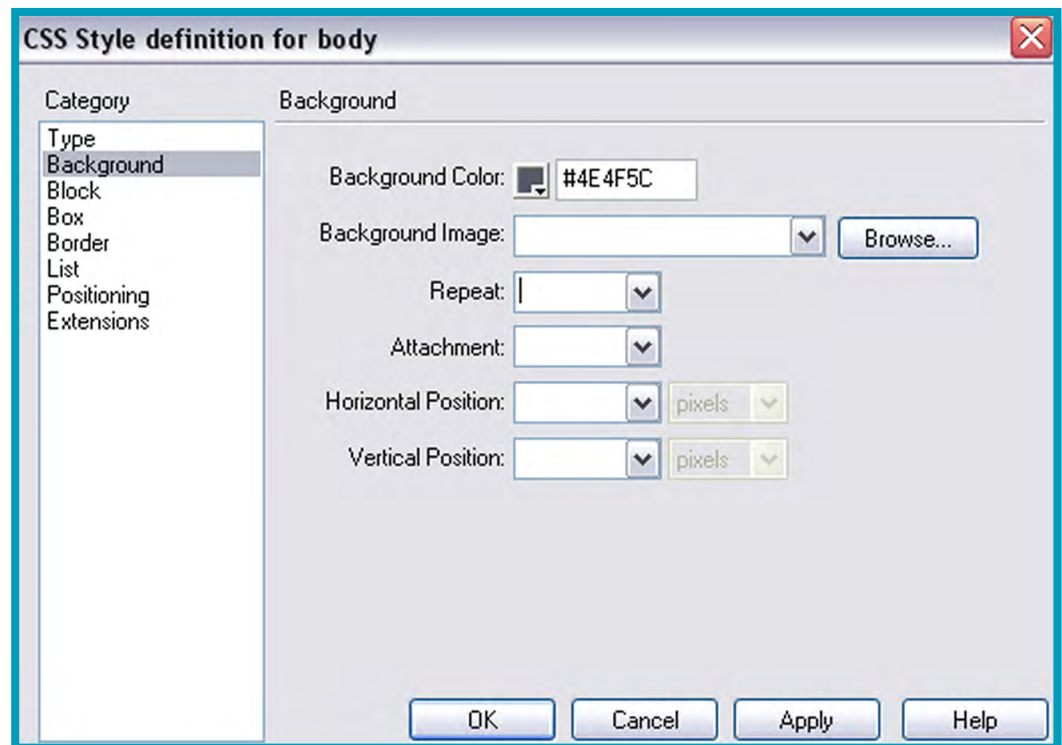


c) Next choose the background option and in the background color field type in the following value;

- #4E4F5C

Your style palette should look like so;

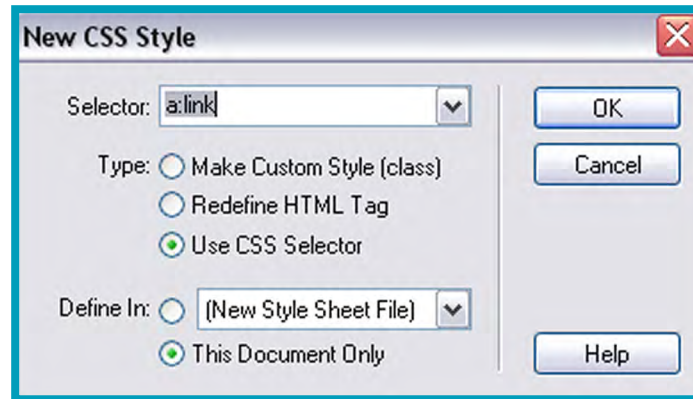
Figure 20: Screen shot of selecting a new style.



Now let's do our links. Because the background color has a fair splash of gray running through it, we can use grays to create nice looking offset colors.

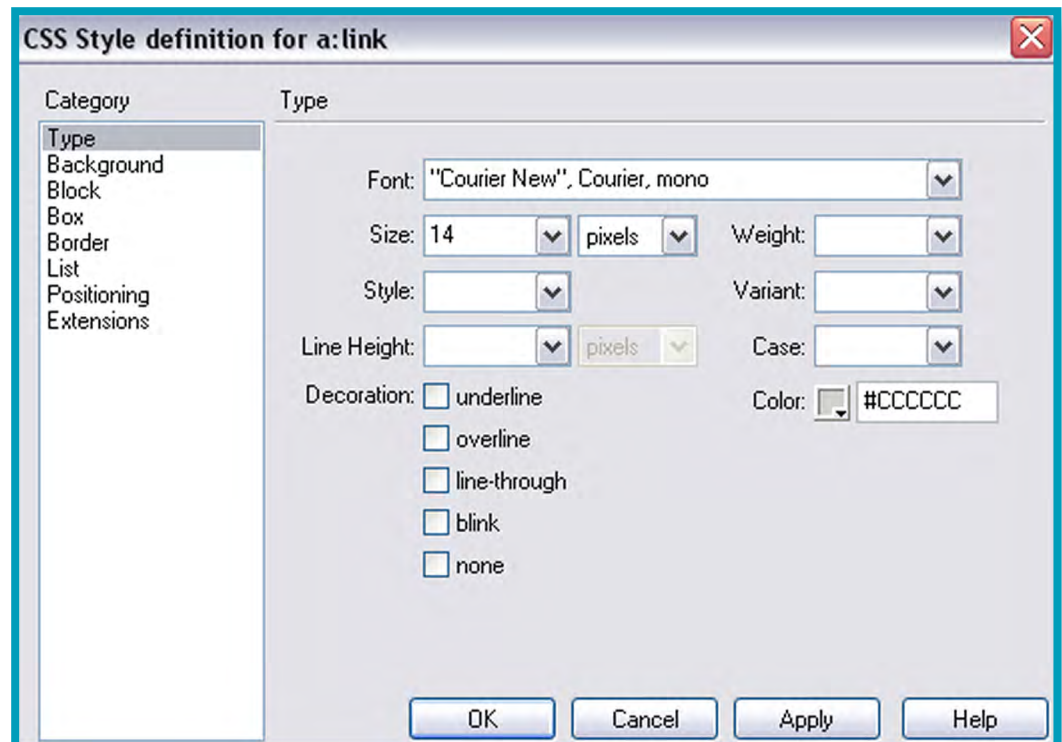
d) In Dreamweaver create a new style and choose Use CSS Selector. The first link style we will create is for the `a:link` pseudo selector. The following screen shot is of the `a:link` pseudo selector.

Figure 21: Screen shot of a CSS Selector.



e) Then type in the following values in the type category of the style palette

Figure 22: Screen shot of values for a:link.



Step By Step Tutorial

f) Then repeat the procedure for the a:visited pseudo selector, with the only difference being a different font color. Use #999999 as the color of the font.

g) As before repeat the procedure for the a:hover pseudo selector. This time use the color #FFFFFF. The other options remain the same as previous link styles.

Now that we have our preliminary styles defined, let's move on to creating some links and positioning them.

Step 2: Create and Position Links

To make the placement of our links more conducive to pixel perfect placement, we are going to insert a CSS Layer into the document and then insert the links within that layer.

a) In Dreamweaver go to the Insert menu and choose Insert Layer.

b) In the id value field of the Layer type in linksLYR. Position the layer 20px from left and 140px from top.

c) Inside the layer type in the following text; this is link 1. Hit enter and then type in this is link 2. Hit enter again and type in this is link 3.

d) Select the text "This is link 1".

Step 3: Create the First Tip

a) From the behaviors palette select the 333Creative and ToolTipsFX option.

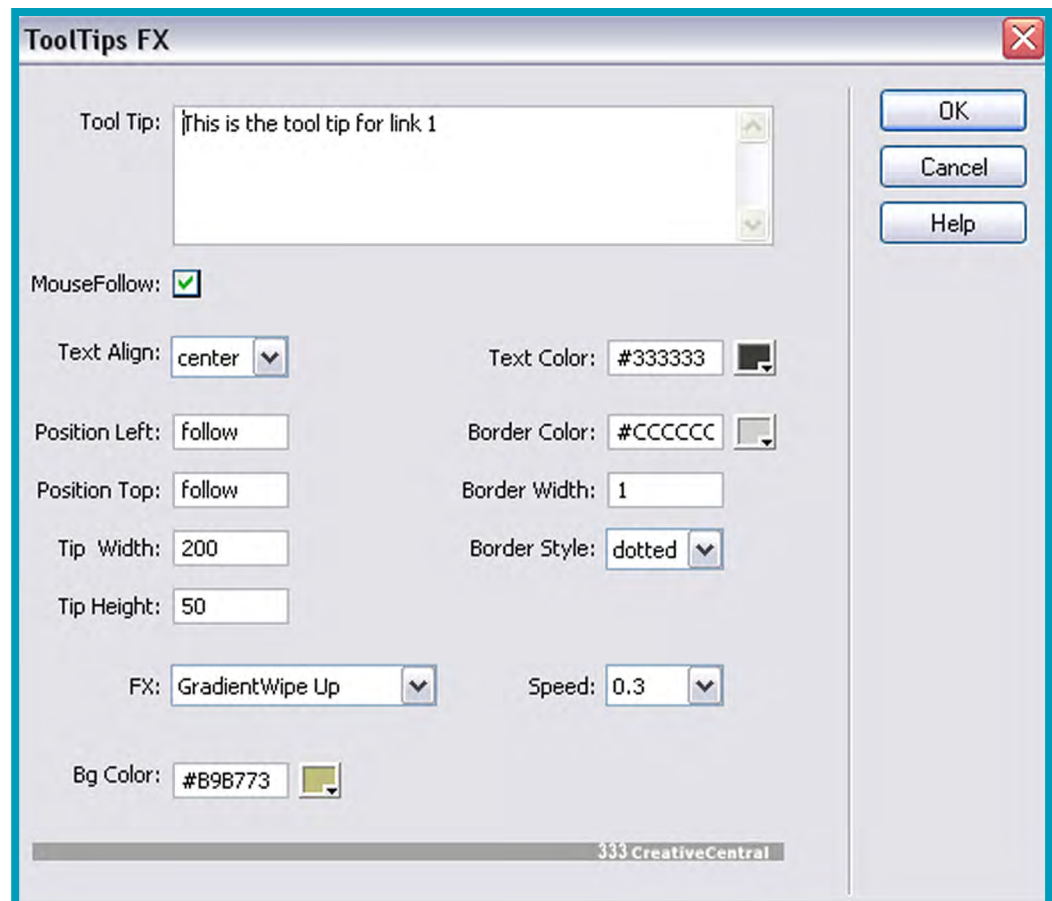
b) In the Tool Tip option, type in the following text;

• This is a tool tip for link 1

Step By Step Tutorial

c) Then use the same settings that you see in the following screen shot;

Figure 23: Screen shot of values for the first tip.



Congratulations, you have just created your first tool tip. Now in the following we will combine some html formatting with our tool tip.

Step 4: Add Some HTML Formatting

a) First we need to create a custom css class to use with the tool tip. Create a new style from the style palette and name it .white. Set the font color to #FFFFFF, the font to New Courier, and the size to 14 pixels.

b) Select the link "This is link 2"

Step By Step Tutorial

c) Then from the behaviors palette select the 333Creative and ToolTips FX option.

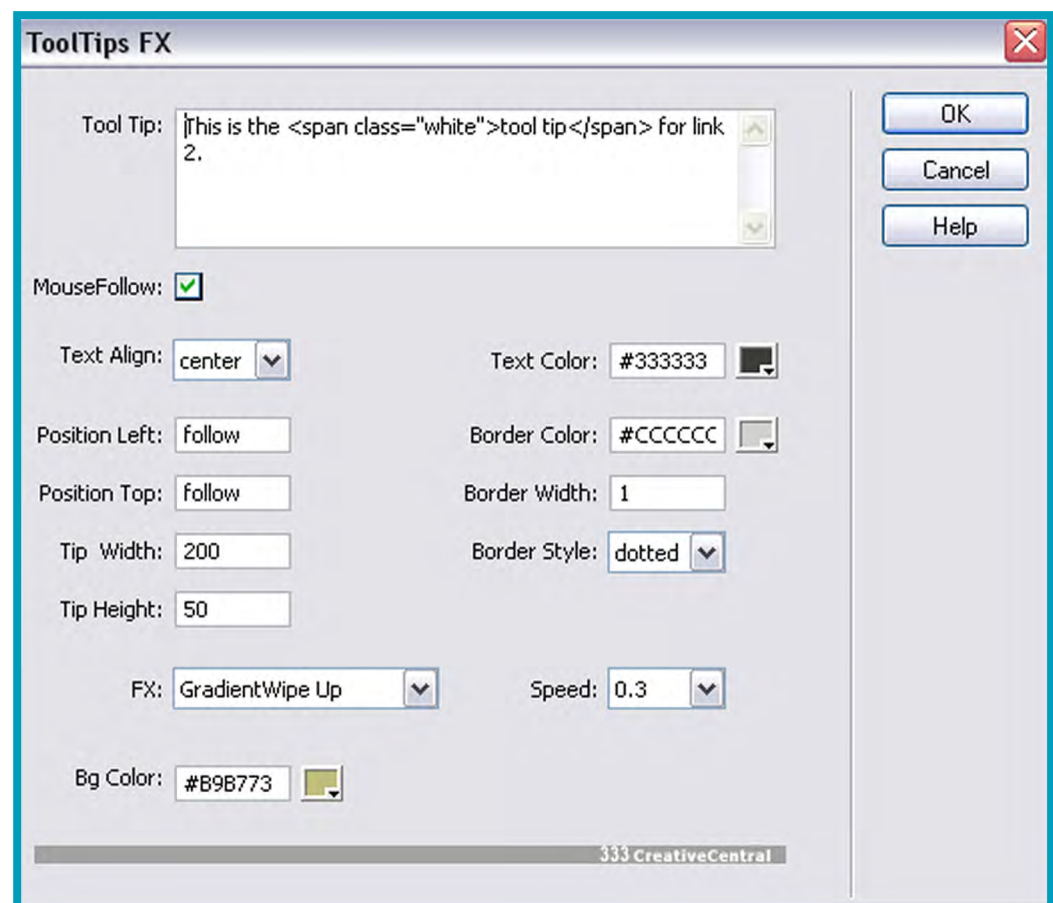
d) In the Tool Tip option, type in the following text and html;

- This is the `tool tip` for link 2.

Understand what is occurring here? We are applying a custom class (.white) to the text "tool tip". In this way we can give those two words a different appearance to the rest of the text, so that they are highlighted.

e) To finish off the tool tip use the same settings that you see in the following screen shot;

Figure 24: Screen shot of values for the second tip.



Step By Step Tutorial

Ok two tool tips down, just one to go. In the next example, we are going to use absolute positioning instead of the mousefollow feature.

Step 5: Using Absolute Positioning

When you are using the absolute positioning features of the extension, it is useful to think of it as positioning a normal layer because that is exactly what you are doing.

a) Select the link "This is link 3"

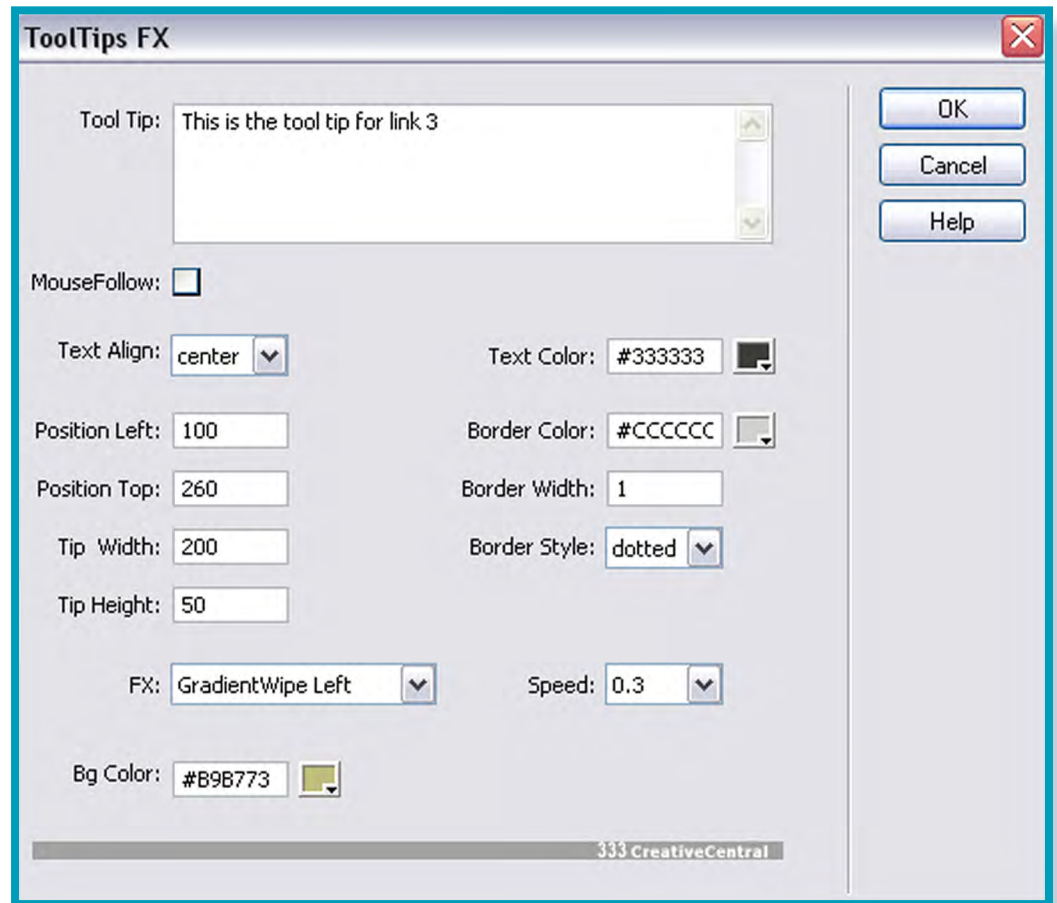
b) Then from the behaviors palette select the 333Creative and ToolTipsFX option.

c) In the Tool Tip option, type in the following text and html;

- `This is the tool tip for link 3.`

d) To complete the tool tip use the same settings that you see in the following screen shot;

Figure 25: Screen shot of values for the third tip.



In the above example, all we did is position the tool tip layer 260 pixels from top and 100 pixels from left by first switching the mouse toggle feature off.

Creating tool tips does not come much easier than this as this little step through tutorial demonstrated.



Support

As is the case with all our extensions, the purchase of this extension entitles you to receive support if you experience difficulties or want to request a feature or simply just want to ask a question.

Your first port of call should be to email the following address support@333creativecentral.com

Our response rate is generally within the first few hours of receiving the email, sometimes within minutes. However there are times we need to sleep too, so occasionally we may not be able to respond as quickly as we would like given time differences around the world. We do however respond to all emails with 24 hours, unless technical difficulties prevent us from doing so.

Phone support is also available, but please arrange a time with us first by email and we will do our utmost to answer your queries and concerns.

Thank You

The 333 Creative Central Team.

